

# PRONTO xi

Overview



## ERP & analytics software

Blending innovation and continuity

## Trademarks

Pronto Software, Pronto, Pronto Xi, the Pronto interrobang logo, the P interrobang logo, Pronto Woven, Pronto iQ and Pronto Cloud are all registered trademarks of Pronto Software Limited. All other marks are the property of their respective owners.

Copyright © 2022 Pronto Software Limited (ABN 47001337248).

## Disclaimer

This document contains statements related to our current and future developments that may constitute forward-looking statements.

They are subject to changes and may be available in a Pronto Xi 770 service pack or future release of Pronto Xi.

All diagrams, drawings, product screenshots and any other types of visualisations in this document, use demo or synthetic data created for display purposes only.

# Contents

<b>Blending innovation and continuity</b>	<b>4</b>
<b>Introduction</b>	<b>5</b>
<b>About Pronto Xi</b>	<b>6</b>
Core offering	6
Additional competencies	6
Extra intelligence	7
<b>Platform &amp; Applications</b>	<b>8</b>
Foundation	9
Integration	10
Financials	10
Payroll & Resources	11
Distribution	11
B2B eCommerce	12
Retail	12
CRM	13
Supply Chain	13
Asset & Facility Management	14
Manufacturing	14
<b>Intelligence</b>	<b>15</b>
Applications	16
Visualisations	16
<b>Web Interface</b>	<b>18</b>
Highly accessible	19
Accuracy accelerates	19
<b>Pronto Software Services</b>	<b>20</b>
Implementation	21
Training	21
Ongoing support	21
Managed services	22
Enterprise security	22
Roadmap	22

# Blending innovation and continuity

## A message from our **Managing Director**



Pronto Software is an Australian developer of award-winning business management solutions. Pronto Xi — our flagship Enterprise Resource Planning (ERP) software — is built around a core engine of financials and business reporting, helping you to monitor and control every aspect of your business, from top floor to shop floor. Pronto Xi, our flagship Enterprise Resource Planning (ERP) software helps you to monitor and control every aspect of your business, from top floor to shop floor.

From improving productivity and customer service to increased inventory accuracy and more, you gain actionable insights that allow you to easily identify what is making you money and how to grow your best opportunities.

Headquartered in Melbourne, we have offices and consultants across the country — as well as a local Development Centre — to support our customers, who interact every day with the experts working to solve their challenges. Our consistent R&D investment in bold initiatives help us deliver groundbreaking results for our customers.

The Pronto Software group includes Pronto Woven, our digital consultancy division; Pronto Cloud, offering cloud and managed solutions; and Pronto iQ, enabling powerful data analytics and insights. As a team, we strive for innovation — in how we work and in the technology we build.

When you choose Pronto Software, you get a pinpointed approach to helping you achieve exceptional business outcomes, assisted by a team with decades of industry experience. It's why Pronto Software is the trusted IT partner of more than 1,500 global and Australian businesses — and has been for over 40 years.

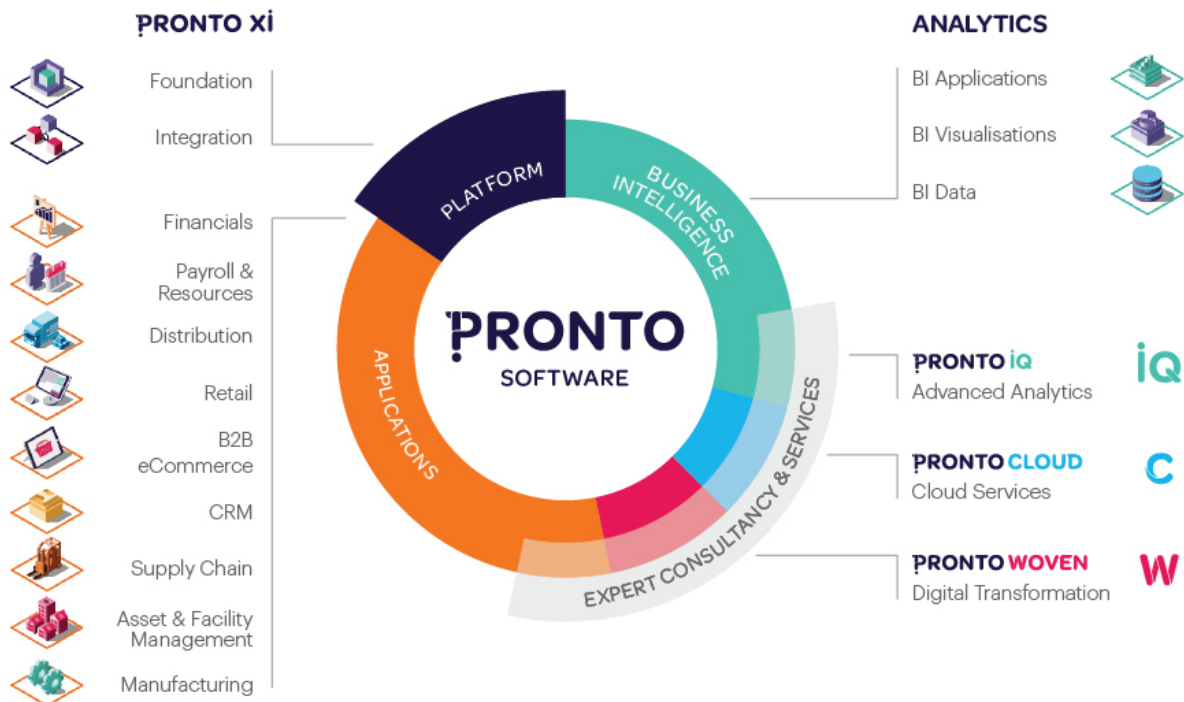
A handwritten signature in black ink, appearing to read 'Chad Gates'.

**Chad Gates**

Managing Director, Pronto Software Limited

# Introduction

We focus on helping you run your business so you can focus on **growing it**



Powerful ERP software helps you manage all the key aspects of your day-to-day business operations — from financials, sales, marketing, distribution and manufacturing to supply chain, asset and facility management — all within one fully integrated system.

In our work with Australian and global businesses across a wide range of industries, we've learnt that your ERP needs aren't limited by your business size or type. You could be a growing local business, a global manufacturer, or somewhere in-between — it always starts with your business goals, because these are what lead us to build a solution that answers even your hardest questions. For us, every engagement is an opportunity to develop a long-lasting partnership.

Pronto Xi is modular, meaning we build based on your business needs, not the other way round. Our diverse competency set gives your business solutions to increase productivity, lower costs, simplify tasks — and achieve more — faster.

Begin with our core offering of business basics, add the competencies that suit your requirements and leverage actionable insights from our business intelligence tools built on IBM™ Cognos™ technology\* — trusted by more than 23,000 leading companies worldwide. With easy and immediate insights into the innermost workings of your company, you can make critical decisions quickly and with confidence. It's why ERP is often described as a business management solution.

Whether you're seeking to expand your workforce or improve workflow, with Pronto Xi you can step up and take your business where it needs to be.

\*IBM and Cognos are trade marks of International Business Machines Corporation, and are registered in many jurisdictions

# About Pronto Xi

Your business relies on tools that help to **increase productivity, lower costs** and **simplify tasks**. Instead of the market-standard “one-size-fits-all” approach, Pronto Xi is designed to easily adapt to your business structure and processes



With a flexible and scalable offering, Pronto Xi is suited to a wide range of industries. Build your ideal business management solution off the back of our core offering, add competencies and discover insights that make sense for your business.

## Core offering

### Let's start with the basics

Quality is said to be the result of intelligent effort. And no matter what your industry, business size or market, there are certain things you'll need to take care of. At Pronto Software, we help you build a solution to reduce effort and increase results.

When we developed the fundamental platform for Pronto Xi, we listened to business leaders from across the globe and built a core framework that expands and grows as you do.

Use Pronto Xi to establish a comprehensive general ledger, take command of tricky paperwork, optimise your supply chain and more. Get instant insight into your business and make crucial business decisions with confidence. Plus, Pronto Xi is protected by an enterprise-grade secure authentication method that supports your growth.

## Additional competencies

### Flex and grow

We have a diverse customer base, from the fields they specialise in to the size of their operations. Through our long-lasting relationships with clients in almost every industry, we have developed a comprehensive suite of competencies encompassing almost all facets of business.

We'll help you to choose the right modules for your business requirements, and we can adapt those modules to better suit your needs.

By getting the most out of Pronto Xi, you'll be getting the most out of your business.

# PRONTO XI



Pronto Xi product family

## Extra intelligence

### Boost your business IQ

When you're juggling the myriad demands of a business, it is easy to overlook the finer details — and even easier to miss the bigger picture. Sometimes the answers to your biggest problems are lost in complex or repetitive data; sometimes, your biggest problems are themselves obscured by an inability to pull back and see the big picture.

Our analytics, fine-tuned to your exact requirements, work hard to uncover the numbers and patterns to support the most crucial business decisions.

Built on IBM Cognos Analytics technology, our integrated Business Intelligence (BI) modules reveal unique business insights, from a broad overview to minute detail.

IBM Cognos Analytics gives you instant access to a range of tools, enabling you to better analyse your business through a single, easy-to-use interface.

And, because it's all online, you can access the information you need whenever you want, wherever you want.

A woman with long brown hair, wearing a white lab coat, is seated at a desk in a clinical or office environment. She is looking down at a laptop, with her hands on the keyboard. The background shows a white cabinet and a blurred office setting.

# Platform & Applications

Individual modules from our competency set are easily adaptable to **suit your unique business needs**

The tools  
of your  
trade





## Foundation

### A platform to build on

To run cleverly and seamlessly, Pronto Xi's modular applications rely on a core infrastructure that's virtually bulletproof.

It begins with the "nuts and bolts" that enable the system to operate: the relational database, operating systems, Runtime, and the web interface, your portal to Pronto Xi's applications.

For added flexibility and choice of connectivity, Pronto Connect offers industry-standard RESTful APIs that allow web, mobile and other applications to access Pronto Xi data via web services. These integration opportunities let you transform your Pronto Xi solution into a platform of connected applications – including our own web applications and native mobile apps, and our rapidly expanding Solution Partner ecosystem – that has the reliability and transactional performance of Pronto Xi at its very core.

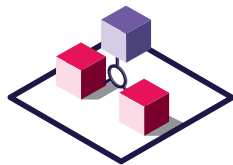
With Webhooks and Alert Intelligence, build do-it-yourself data-broadcast integrations to push data to third-party applications via Zapier, IFTTT and other middleware. Alert Intelligence and signed URLs can also be integrated into the Pronto Xi Notifier App.

A rich Applistructure layer lets you make Pronto Xi the perfect fit for your unique business needs. Set up system alerts, define system tasks, create information data grids for a particular business process, or customise screens to see the most important operational information at a glance.

Pronto Xi also allows you to easily complete day-to-day administrator tasks, from performing backups and setting network protocols to defining roles or security settings.

For businesses that want to do their own customisation, there are a range of developer tools, including the Rapid Application Development Environment (RAD) and a Software Development Kit (SDK).





## Integration

### The missing link

The Pronto Connect API platform enables secure and real-time data exchange between Pronto Xi and related mobile, web and desktop applications, as well as providing the foundation for system-to-system integrations.

With a rich library of standard APIs, plus the ability to author custom APIs, Pronto Connect is highly adaptable to the needs of your business.

Expand operations and improve the customer experience by integrating Pronto Xi with other software platforms through Pronto Xi Sync. Data flows seamlessly between systems, allowing you to maintain a single source of truth without the accompanying growing pains or administrative burden.



## Financials

### Accountability is the bottom line

Pronto Xi's powerful transaction engine integrates all your financial activities into a single control centre, providing you with the crucial information you need to monitor and grow profitability.

Achieve perfect balance with the fully integrated General Ledger, and get the complete financial picture with automatic transaction posting from sub-ledgers including Accounts Receivable, Accounts Payable and Inventory. You can even manage multiple currencies and multiple companies, making it easy to control complex enterprise data across group companies.

By presenting the financial outcomes of your organisation's activities, Financials gives you crucial insights and information to monitor and maintain your bottom line.



## Payroll & Resources

### Maximise the potential of your assets

Optimise your business resources with Pronto Xi's Resource Management and Resource Scheduler modules. These integrate directly into Project, Service, Plant Maintenance and Payroll modules, enabling you to efficiently manage resources, teams or equipment. In addition, the Human Resource Management (HRM) module helps you control detailed staff information, so you can meet the personnel management requirements of your organisation.

Pronto Xi's fully integrated Payroll module is compliant with Australia's Single Touch Payroll (STP) guidelines. It takes care of full-time, part-time and casual employees, hourly rates and annual salaries, and it flexibly handles employee leave and tax changes. Pay run workflows are easy to set up and are powered by in-depth reports, including summaries and discrepancies.

Employee Portal offers your staff a self-service option for pay slips, as well as leave and timesheet entry.



## Distribution

### Inventory in motion

Keep the heart of your supply chain healthy with Distribution.

Easily handle all aspects of your sales ordering, and automatically update your stock and inventory levels.

Get a clear picture of inventory across all business locations through the real-time tracking of stock levels and movement.

Keep a keen eye on the stock coming in and out of your door with the Sales and Purchasing modules. Automatically allocate backorders and stock replenishment, calculate freight, and track dispatch across multiple countries and currencies, all while having full access to your activity history.





## Retail

### One platform, full visibility

With fully integrated Point of Sale and eCommerce modules, Pronto Xi provides a true multichannel approach to retail that engages customers on their preferred mediums.

Create a secure yet simple shopping experience for your customers – on whatever device they use, wherever they are.

Manage warranty claims and repair requests with ease through the Repairs module.

Empower your staff to engage customers in-store with the Pronto POS App, or use it as your complete point-of-sale solution.



## B2B eCommerce

### Transforming your reach

Pronto Xi Avenue enables B2B organisations to rapidly extend the in-store experience to online while delivering omni-channel excellence.

As part of ERP and analytics software, Avenue seamlessly integrates with other powerful applications aligned to key aspects of the eCommerce experience. With a stunning and intuitive user interface, Avenue is a rapidly scalable platform that enables your business to deliver frictionless eCommerce, from browsing to purchasing.



## CRM

### The extra mile

Pronto Xi's fully responsive Customer Relationship Management (CRM) module allows you to maintain a powerful relationship with your customers, whether you're in the office or on the road.

The CRM makes it easy to manage the complete customer lifecycle, from the early beginnings of prospecting to the final sale and more. It also allows your sales teams to perform advanced segmentation, enabling targeted and personalised customer communications.



## Supply Chain

### On time, every time

Track your current supply chain activity and forecast future movements through the seamless coordination and integration of your product, information and distribution network.

Automate supplier priorities, lead times and inventory targets to make sure your supply always matches your demand.

Maintain a paperless warehouse with state-of-the-art wireless functionality that lets you keep tabs on your sales and dispatch processes.

Optimise your supply chain planning with accurate, real-time inventory management and analysis, designed to help you understand trends and reveal insights into your future demand.

Ensure optimum efficiency with an extended warehouse and inventory management system that supports automatic allocation of incoming goods to locations, efficient picking, automatic replenishment, dispatch confirmation and location control of warehouse stock



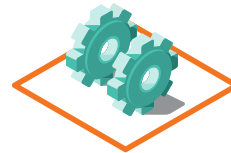


## Asset & Facility Management

### Simplified services

Manage your projects with a fully integrated project management solution. From tender stage to project delivery, Pronto Xi's Project module helps you manage your resources, tasks and milestones so you can focus on exceptions.

Reduce asset failure rates and maintenance costs with Pronto Xi's Maintenance Management solution. Monitor detailed maintenance schedules to extend the life expectancy of your equipment, ensuring your assets' high availability.



## Manufacturing

### Make more with less

Quality control is at the core of our flexible suite of manufacturing tools, designed to cater to almost any production technique from make-to-stock to configure-to-order. Whether your goal is trimming the fat on the factory floor or bulking up production volume, our manufacturing tools are designed to ensure you run a tight ship.

Plan your production with detailed views of manufacturing resources and raw materials, and get comprehensive feedback on consumption and production results.

View your entire operations at a glance and adjust production routing to maximise your manufacturing resources. Gain a better understanding of how resource capacity impacts on your production requirements, and reduce product cycle time to meet your deadlines.

Support continuous improvement and quality management through tighter process control, allowing you to meet your certification requirements.

# Intelligence

## From bird's eye view to deep insights

Built on IBM Cognos technology, Business Intelligence (BI) puts powerful business insights at your fingertips. Combining dynamic key performance indicator (KPI) dashboards with the ability to create your own custom reports, BI helps you dig deeper into every aspect of your operations.

Customer expectations evolve quickly – so you need to know more than just the current state of your business. Business leaders need to answer questions such as: “How did we get here?”, “What do we expect will happen next?” and “What key decisions do we need to make?”

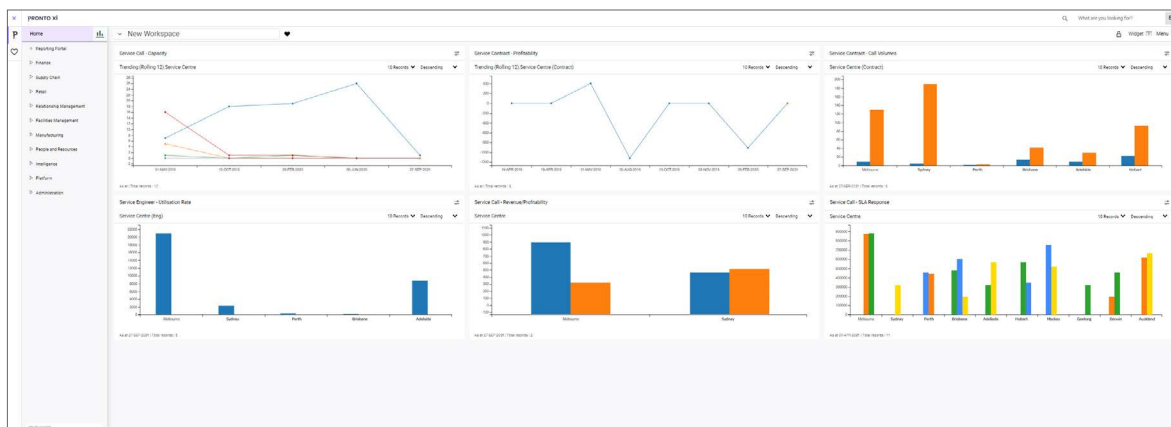
Analysts need to see beyond today for the insights that will help them make more informed decisions tomorrow. The next generation of BI is fuelled by artificial intelligence (AI) and machine learning capabilities that augment the user's ability to find insights in complex data.

IBM Cognos Analytics is now integrated with a powerful AI engine, IBM™ Watson™ technology\*, which provides data insights and automated data-cleansing, along with date-based forecasts to help you visualise business trends.

IBM Watson technology leverages the IBM Watson Natural Language Processing capability to provide deeper insights in its Conversation Assistant. IBM Watson Discovery helps users to better navigate the product through the Learn panel, while the Data Modules and Data Explorer tools enable greater collaboration and data-driven decision-making.

BI's user-friendly design means there are no barriers to retrieving the information you need.

By having the right insights available when you need them, you can make better decisions quickly and empower your staff to act based on real-time data.



Customise your workspace to get an overview of key information and metrics

\*IBM and Watson are trade marks of International Business Machines Corporation, and are registered in many jurisdictions



## Applications

### Unlock deeper insights

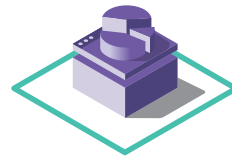
Business Intelligence is powered by IBM Cognos Analytics, making it an industry-leading Analytics platform.

Complementing IBM Cognos technology is a range of Pronto Xi applications developed to take your data analysis to new heights.

Our BI platform is available to all Pronto Xi users, and gives you access to better insights, faster:

- Out-of-the-box operational and financial reports.
- Integrated data model to easily build your own custom reports and dashboards.

In addition, IBM Cognos Mobile BI provides an interactive and secure environment to view and analyse data on compatible smart devices.



## Visualisations

### See between the lines

BI is packed with data visualisation tools, delivering a clear picture of your business performance.

Stunning dashboards and KPI widgets are easy to create and customise, giving you a powerful view across your business.

Charts and reports are available as an “out-of-the-box” solution, or can be configured to suit your unique requirements. BI also offers a range of display options, so you can select the visualisation that allows you to most effectively demonstrate your data and share your findings with others.





## Data

### **Better data, better decisions**

Behind Pronto Xi's rich visualisations, a vast amount of data drives reports you use to make daily decisions.

Whether you're accessing KPI snapshots via your workspace or building real-time reports from transactional data, Pronto Xi delivers the answers you are looking for.

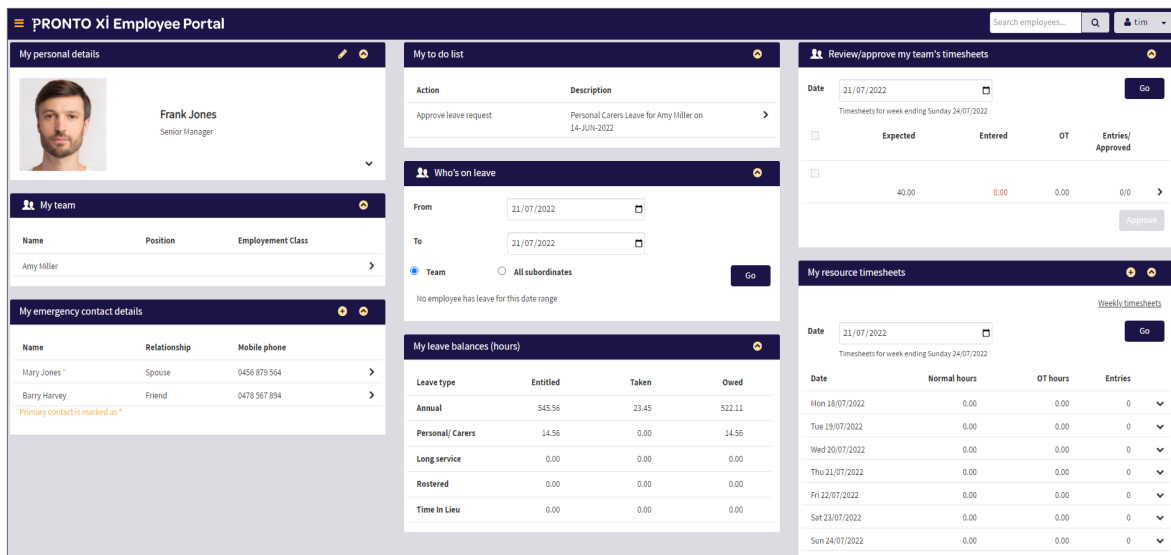
In addition, Pronto Xi's Data Quality Management (DQM) solution means you can be confident in the quality of your data. This powerful tool safeguards your data's integrity through the periodic scanning of records, followed by user alerts and suggested actions.



# Web Interface

Behind a desk or  
**on the move?**  
Pronto Xi offers  
a seamless user  
experience

Designed  
for you



Maintain detailed staff information with the Employee Portal

User experience (UX) design is all about simplifying processes. Our deep research and knowledge of UX has allowed us to design a user interface that meets the needs of real-world users and optimises productivity. Using modern web technologies, Pronto Xi delivers a fast and responsive web interface that's accessible no matter where you are, adapts well to different screen sizes, and offers an intuitive approach to interaction design.

Navigating screens and menus, entering and viewing data, running reports, and configuring user preferences and favourites are all straightforward. Data entry is also simple, whether you're using a keyboard and mouse or a touch-screen mobile device.

Regardless of which Pronto Xi modules you use, their consistent format and functionality makes the tools quick and easy to learn.

## Highly accessible

Pronto Xi's web-based user interface gives you the flexibility to do what you need to do, whenever and wherever you need to do it – all without the need for software installation.

If you do need to use locally installed software or locally attached hardware peripherals, Pronto Xi has an optional local extension explicitly designed for this purpose, so you can have the best of both worlds.

## Accelerate accuracy

Data entry validation happens at a field level in real time – not at the end of a task, once a form is submitted. This avoids any lag time or the need for data re-entry, verifies that business process rules are being followed, and helps users to complete their tasks as efficiently as possible.

# Pronto Software Services

Get the most out of your Pronto Xi system with the **support of our expert teams**



Switched-on support

From start to finish, our consulting team will guide you through the implementation of your Pronto Xi system. Our consultants have a wide range of practical business experience across a variety of technologies and industries, so you can be confident you're talking to someone in the know. Armed with the analytical skills that allow them to properly understand the nuances of your business, they're ready to help you adopt your new business management software and reveal what it can do for you.

We use our proven implementation framework to make sure your system is installed on time and on budget.

Before handing over the reins, we help you carry out testing of your new system. This includes running business simulations to resolve any potential issues, building bespoke user interfaces and making any necessary final amendments or customisations.

Finally, we're right there with you during the go-live process and continue to be on hand until you are confident you've got full control over your business.

## Implementation

### Getting things started

We have a tried-and-tested framework to ensure Pronto Xi is up and running as efficiently as possible. We call it the Pronto Implementation Methodology, or PIM. Over the years, PIM has been proven to make the implementation process easier and to drastically reduce the risks usually associated with business-critical projects. It's a powerful way to ensure your new Pronto Xi solution is delivered on time and on budget.

We start by working with you to establish a cooperative and controlled project charter. This document helps us determine the correct timing and sequence of implementation processes, and lets you know when you can expect tasks to be completed.

We follow this up with detailed checklists to ensure tasks are carried out according to the project plan, and monitor and track progress through regular reporting.

## Training

### Empower your team

The PIM process also identifies your training needs, based on which Pronto Xi modules are being installed, how they will be used and who will use them. Training continues to be available post-installation for new staff or for anyone needing to learn new modules or tools.

Training information – including sessions, dates, locations and registration requirements – is posted on our online knowledge base. Training courses are organised either in a classroom-based setting or on-site at your business.

## Customisations

### Ready for anything

We know that in our business, there's no such thing as "one size fits all". Our team is always looking for new ways to adapt our product to best suit your business, and then deliver those enhancements as quickly as possible. The architecture of Pronto Xi is designed to accommodate customised enhancements when you upgrade to new releases in the future.

## Ongoing support

### Always on hand

Your Pronto Xi installation is backed by comprehensive ongoing support, and we're always ready to listen and adjust to your needs. Our local support services include a dedicated help desk and online knowledge base, as well as fixes and workarounds for software issues.

Our team has practical experience across a range of industries, company roles and Pronto Xi modules. They have backgrounds as software users, accountants, warehouse managers, production managers, administrators and project managers – so you will always be connected with a qualified staff member who understands the specific needs and requirements of your business.



## Online help

### A wealth of knowledge

In addition to our dedicated help desk, we also offer a range of online tools to help you quickly find answers to your questions.

Our web support resources – including news, user forums and handy hints – are continually updated, and you'll also find full product manuals, release notes and fixed-readiness information online.

Our forums give you access to a community of end users, developers and help desk staff, providing you with practical insight into our products and services.

If you need to get in touch with us, you can log and track your service calls online. You'll be sent an email confirmation, including your call number, to follow progress in real time.

## Managed services

### Leave IT to us

Want more time to concentrate on your core business? Then let us take care of your IT system. Pronto Cloud provides custom service packages to manage, monitor and maintain your IT infrastructure.

With Pronto Xi on-premise, hosted or in the cloud, you gain enormous flexibility to modify or scale systems as you grow. Our solutions equip your company with the essential tools for doing business. And, with a simplified, easy-to-use IT set-up, you can save on overheads too.

## Enterprise security

### Secure your data

We offer a range of robust security features, so you can be confident that your business is protected.

Administrators can use roles and security profiles to control access from a company level right down to the field.

Pronto Xi's Identity and Access Management (IAM) solution - provides integration with Azure Active Directory and Okta, enables SSO, MFA and self-serve password management, increasing security and simplifying user access.

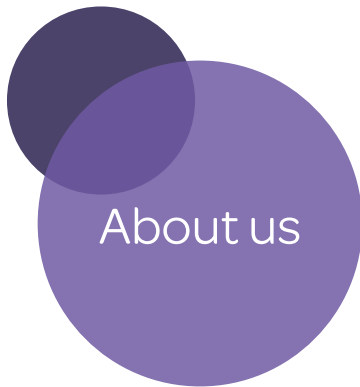
HTTPS, digital certificates, reverse proxy servers, two-factor authentication and single tenant architecture are some of the other tools we use to keep Pronto Xi secure at all times.

## Roadmap

### One step ahead

Our maintenance agreements give you full access to Pronto Xi's future product upgrades, new features and enhancements.





## **PRONTO** SOFTWARE

We are an Australian developer of award winning business management and analytics solutions. Pronto Xi, our Enterprise Resource Planning (ERP) software, integrates accounting, operational and mobile features in a single system – optimising business processes and unlocking actionable insights. That's why for more than 40 years, over 1,500 Australian and global organisations, across a wide range of industries, have trusted Pronto Xi to simplify their most complex challenges.

With headquarters and our Development Centre located in Melbourne, we have support offices and consultants based across Australia, as well as a global network of Resellers and Solution Partners. Specialised business units within Pronto Software have the expertise to assist you with pivotal technology – Digital Transformation with Pronto Woven, Cloud and Hosting services with Pronto Cloud and Business Intelligence solutions with Pronto iQ.

When you choose Pronto Software, you gain a team with deep industry experience, giving us the ability to understand your specific needs and build innovative solutions that drive business growth and revenue.

---

info@pronto.net  
1300 PRONTO (1300 77 66 86)

 pronto.net  
 @ProntoSoftware

 Pronto-Software  
 ProntoSoftware