

# Facial Recognition for Registered Clubs and Entertainment Venues



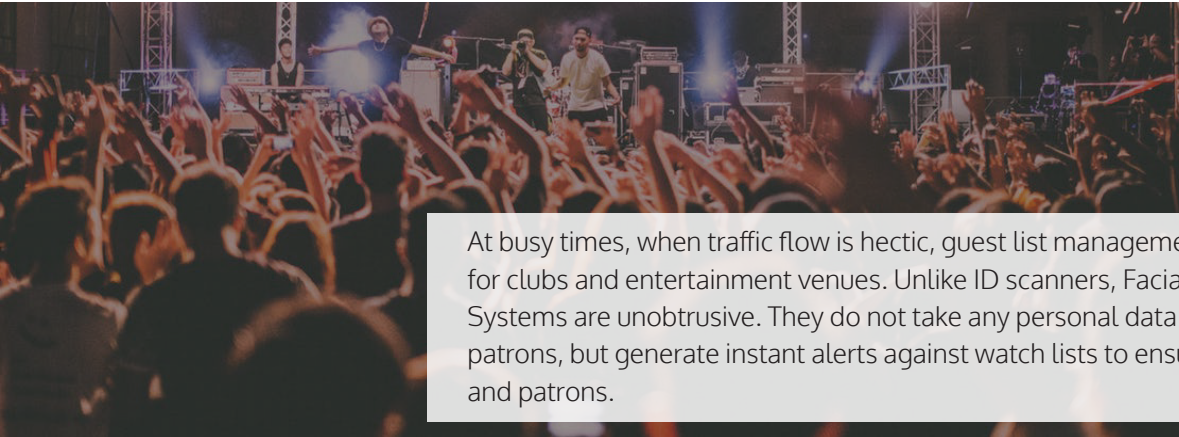
## Intelligent Surveillance Solutions



Master Licence No:410271268  
[abtsecuritysystems.com.au](http://abtsecuritysystems.com.au)

Master Licence No:410271268

# Recognition-as-a-Service (RaaS) : generate real-time alerts using highly accurate facial recognition technology



At busy times, when traffic flow is hectic, guest list management can be a major challenge for clubs and entertainment venues. Unlike ID scanners, Facial Recognition Security Systems are unobtrusive. They do not take any personal data and require no interaction with patrons, but generate instant alerts against watch lists to ensure the safety of the property and patrons.

**ABT Security Systems implements NEC NeoFace®, which is the fastest and most accurate face recognition software in the market. Features include real-time video surveillance, off-line video face search and high volume photo face search. It can be easily integrated with your existing security systems.**

## Understanding of the special security needs in a club environment

- Security threats are a growing concern to all businesses; the club environment is no exception, in fact the threat is amplified.
- Security and facilities managers need to monitor and/or exclude known undesirables and unknowns from their facilities and identify excluded individuals.
- Management needs to identify staff, directors and representatives from competing organisations (including Poachers).
- Member Services want to track returning VIP's for enhanced customer experience.

## Upgrade your existing surveillance systems into the most accurate face recognition solution

ABT's Facial Recognition solution is specifically designed to integrate with existing surveillance systems and match against a 'watch list' of individuals. When the system identifies an individual of interest from the 'watch list,' it raises an alert, so that appropriate actions can be taken rapidly. Independent testing \* confirms that our facial recognition technology by NEC provides the fastest, most accurate matching capability and is the most resistant to variants in aging, race and pose angle.

\*National Institute of Standards and Technology (NIST)

## More than a security system, ABT Facial Recognition tracks subjects' behaviour through the monitored area. It identifies:

- Barred, suspended, banned persons as they enter the club
- Suspicious, undesirable
- Inappropriate (eg age)
- Guests on a RSA list
- Guests on Self-Exclusion lists for alcohol & gaming
- High value gaming members
- VIP Members
- Guest demographics (age, gender, etc.)
- Directors and Staff
- Contractors, Suppliers
- Poachers

“

*“With the uploading of the regular patrons, banned patrons and self-excluded patrons, we have been able to see more efficiency in our staff, providing better customer satisfaction and service and an increase in security for all patrons and staff of the Club.”*

**Boris Belevski**  
CEO of Cabra-Vale Diggers

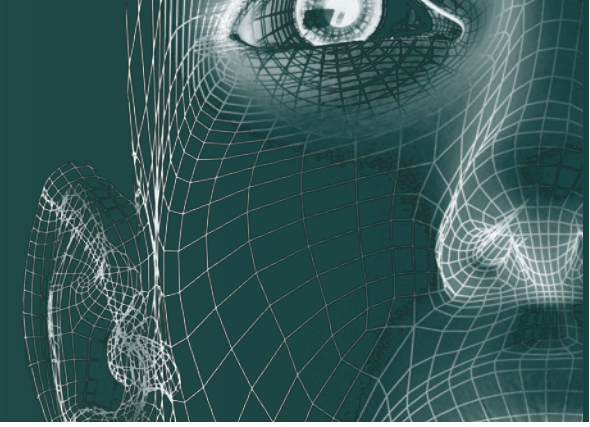
# NEC NeoFace® Face Recognition

■ FASTEST

■ MOST ACCURATE

■ BEST WITH LOW QUALITY IMAGES

■ VERY HIGH TOLERANCE TO SITUATIONAL VARIABLES



ABT Facial Recognition is web-based with an easy-to-use user interface. It is unobtrusive and requires no operator interaction. The application can be easily customised and integrated into existing surveillance operational systems.

With specific application to club environments, when the system identifies an individual of interest from the 'watch list,' it provides instant COVERT recognition of targeted guests at multiple pinch points entering and/or inside the gaming areas. The system creates automated alerts to multiple recipients based on multiple criteria.



## HOW IT WORKS

1.

### CAPTURE

The application takes in real time video streams from surveillance cameras, CCTV or archived video footage at a rate of up to 30 frames per second.

2.

### ASSESS

The individual frames of video are each assessed, faces are detected and then each one analysed to determine its unique facial signature.

3.

### MATCH

The software then undertakes a matching exercise against a watch-list database which includes enrolled images of individuals.

4.

### REACT

Real-time alerts or messages can be configured to be sent if there is a positive match against a database image or on a negative match where an unknown face is captured in a secure area.

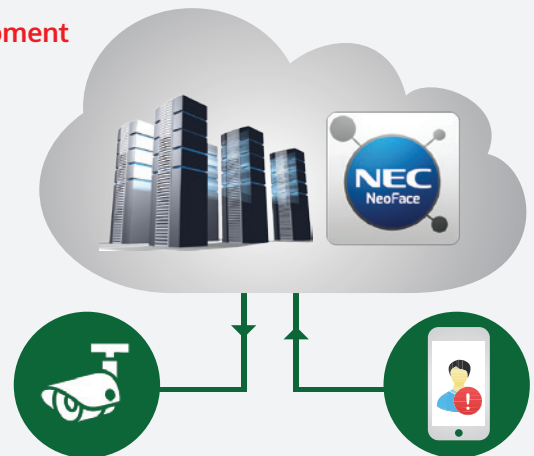
## Cloud Based Facial Recognition by ABT Security Systems

**World-class Cloud hosting managed services facilities using IBM equipment**

With ABT fully managed cloud hosting service, customers have the option to share costs with other users if they desire, further reducing initial costs and providing an entry level system for smaller organisations.

### The benefits of the new 'Cloud based service':

- Sharing infrastructure costs with other similar organisations if desired, including the ability to share banned persons information with other organisations
- Fully independent managed services system operating within the Cloud environment
- Full systems redundancy
- 99.99% uptime guarantee
- Automated backup as part of the service
- All software upgrades service packs available for the life of the contract
- No requirement for major expansion of your existing IT infrastructure or staff
- Faster & easier installation and commissioning of your system



# IT'S ALL ABOUT THE FACE!

## Benefit

- REDUCED CORPORATE RISK
- IMPROVED PUBLIC SAFETY
- ENHANCED MEMBER EXPERIENCE
- DRIVE INCREASED REVENUE/REDUCE COSTS

## At a glance:

- Real-time video surveillance against watch lists
- Generates instant alerts to reduce security threats
- Independently evaluated as the most accurate face recognition solution available
- Highly resilient to varying environmental conditions
- Highly scalable for large facilities, systems and traffic
- Easy integration into existing operational & security processes
- Flexible licensing model
- Does not capture personal details
- Unobtrusive and requires no operator interaction
- High sample set and penetration rate
- Web based thin client easy to deploy
- Highly scalable and extendable
- Easy integration with existing business processes

NEC's NeoFace® face recognition solution is the fastest and most accurate solution available, as measured in independent tests.

- NEC's Video Facial Recognition Technology Ranks 1st in NIST Testing 2017 \*
- NEC NeoFace® ranked 1st in 4 independent tests; 8 years running
- NEC has improved the most, leading further than other vendors
- NEC remains the most accurate since 2009 (MBGC 2009, MBE 2011, FRVT 2013, FIVE 2017)
- NEC is the fastest with the highest number of searches/second (3.1 million+ searches/sec)



*"We went through our requirements together and found the NEC Facial Recognition from ABT Security Systems to be a good fit to meet our requirements. We felt confident that the product offered was reliable and well proven by expert managers who had a great understanding of our situation and needs, and they had an impressive knowledge of the uniqueness of the registered club industry. ABT presented solutions for these requirements to be implemented, cost effectively."*

*Boris Belevski  
CEO of Cabra-Vale Diggers*

For more information, please contact:

ABT Security Systems

Level 1, 37 Epping Rd, Macquarie Park, NSW 2113

P: +61 2 9878 7111 F: +61 2 9888 2720

<https://www.abtsecuritysystems.com.au/>



Master Licence No:410271268

